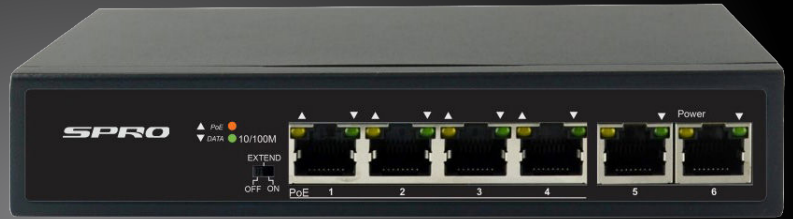


# SPRO<sup>®</sup>

## SWITCH-4P-U

4 PORT POE SWITCH  
Plug-n-play connectivity



**250**  
meters

POE Transmission

**65**  
watts

Power Budget



Plug & Play



Metal Case



2 Uplink Ports

### Key Features:

- Multiple working modes to address your needs: Normal, Secure and Surveillance
- Support port traffic control
- Support for secure mode, all downlink ports can communicate only with uplink ports
- Up to 250m transmission distance on surveillance mode
- Support buffer optimization
- All metal housing, safe and reliable

### Hardware

<b>Model No.</b>	SWITCH-4P-U
<b>Ports</b>	6×100Mbps network ports (RJ45), including 4 PoE ports
<b>Standards</b>	IEEE802.3, IEEE802.3u, IEEE802.3az, IEEE802.3x, IEEE802.3af, IEEE802.3at
<b>Switching Capacity</b>	1.2Gbps
<b>Forwarding Performance</b>	0.90Mbps
<b>Packet Buffer</b>	768Kbit
<b>MAC</b>	2K
<b>Dimensions (WxDxH)</b>	160mm x 93mm x 32mm (6.3"×3.7"×1.3")
<b>Weight</b>	<0.6kg
<b>Power Supply</b>	AC: 100-240V, 50/60Hz
<b>PoE</b>	802.3at/af
<b>Max. PoE Power</b>	Max capacity: 65W Max capacity for single port: 30W
<b>Cooling Fans</b>	0

(continued)

<b>Mean Time Between Failure (MTBF)</b>	>50000 hours
<b>Ambient Temperature</b>	0°C-45°C (32°F-113°F)
<b>Operating Humidity</b>	10%~90% (noncondensing)
<b>Storage Humidity</b>	5%~90% (noncondensing)
<b>Indicator</b>	<p>PWR:</p> <p>Steady on: AC input is normal</p> <p>Off: No AC input</p> <p>PoE:</p> <p>Off: No PoE power supply</p> <p>Steady on: PoE power supply is normal</p> <p>Flashing: PoE power supply is abnormal</p> <p>LINK/ACT:</p> <p>Off: No link</p> <p>Steady: Linked at 10/100Mbps</p> <p>Flashing: Transmitting data</p> <p>Speed:</p> <p>Off: Linked at 10/100Mbps</p> <p>On: Linked at 1000Mbps</p>
<b>Working Mode</b>	<p>Default(Normal mode) : All ports can communicate with each other.</p> <p>EXTEND(Surveillance mode): Transmission distance up to 250 meters.</p> <p>POE Ports only communicate with uplink ports.</p>